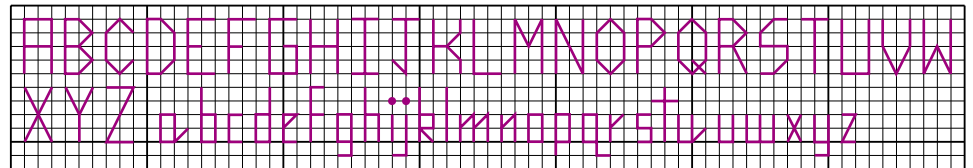


Stitch Count: 41x104 (excluding borders)

1 Square = 1 Cross-Stitch



Alphabet

1 Square = 1 Backstitch

**COLOR KEY**

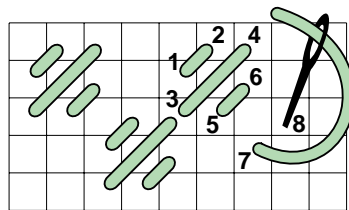
- ◻ White
- ◼ 310 Black
- ◻ 321 Red
- ◻ 726 Lt. Topaz
- ◻ 801 Coffee Brown
- ◻ 841 Lt. Beige-Brown
- ◻ 963 Pale Dusty Rose
- ◻ 3716 Lt. Dusty Rose
- ◻ 3773 Spice
- ◻ 3774 Lt. Spice
- ◻ 3827 Lt. Golden Brown

**BACKSTITCH**

- 310 Black
- 321 Red
- 726 Lt. Topaz
- 798 Dk. Delft
- 3371 Black-Brown

**MOSAIC STITCH**

- ◻ 189 Kismet Needle Necessities overdyed floss



**MOSAIC STITCH**